



WHERE
QUALITY MEETS
GLOBAL
STANDARDS

Sutures

Staplers

meritsurgical.com

Merit Synthetic Absorbable Suture Range

MITSU™ Polyglactin 910



- Mid-term absorbable synthetic suture
- Ideal for soft tissue approximation

MITSU C+™ Polyglactin 910 with Chlorhexidine



- Mid-term absorbable synthetic suture with Chlorhexidine Gluconate
- Minimizes suture induced infections

MITSU FST™ Polyglactin 910 Fast



- Short-term absorbable synthetic suture in undyed form
- Preferred choice over conventional suture for Episiotomy Repair and Skin Closure

FILAXYN™

Polydioxanone Suture

Enduring Strength for long-term wound support

- Provides longer wound support and higher tensile strength retention compared to that offered by other synthetic absorbable sutures
- Pigmented with dark blue colour for enhanced visibility during procedure
- Recommended for fascia and tough tissue closure
- Preferred choice in immunosuppressant patients and in diabetic patients



FILAPRON™

Polyglecaprone 25

A Reliable choice for scarless Sub-cuticular suturing

- Short-term absorption profile
- Superior handling features
- High knot pull tensile strength
- Recommended for subcuticular suturing



Merit Natural Absorbable Suture Range

Optimal, time-tested performance

MERISOFT CHROMIC™

Chromic Catgut

- Chromicized to prolong the absorption period
- Accurate polishing ensures smooth passage through tissue
- Packed in Isopropyl Alcohol to reduce memory



MERISOFT PLAIN™

Plain Catgut

- Highest level of collagen guarantees predictable absorption
- Less memory and increased pliability



FILATWINE™

Pre-Knotted Loop Ligature

Ideal choice of ligature for Laparoscopic Appendectomy Surgery

- Composed of Chromic Catgut Suture
- Offers speedy ligation procedure
- Specially designed for ease of handling



Merit Non-Absorbable Suture Range

FILAPROP™

Polypropylene

Distinguished strength for life long support

- Allows smooth passage through tissue
- Optimal elasticity and elongation properties
- Excellent knot run down and knot security
- Available in Less Memory Tray



FILAMIDE™

Polyamide

Versatility in applications along with exceptional knot security

- Easy to handle
- Smooth passage through tissue
- Excellent histocompatibility



FILASILK™

Silk

Excellent handling characteristics with secured wound closure

- Excellent handling properties
- Good knot security
- Minimal inflammatory reaction in tissues



Merit Cardiovascular Suture Range



Merit Cardiovascular Sutures

BUILDING **TRUST** WITH CONSISTENCY

FILAPROP™
Polypropylene

FILAPROP™ P
Polypropylene with Pledgets

- Unsurpassed strength
- Optimal elasticity and elongation properties
- Excellent knot run down and knot security



Suture Sizes: USP 8-0, 7-0, 6-0, 5-0, 4-0, 3-0 and 2-0
PTFE Firm Pledget Shape & Size (for pledgeted codes):
Oval: 3mm x 3mm x 1.5mm and 2.3mm x 1.5mm x 0.5mm

MERICRON XL™
Polyester

MERICRON XL™ P
Polyester with Pledgets



- Greater strength and pliable structure
- Smoother suture surface
- Less resistance to knot sliding



Suture Sizes: USP 6-0, 5-0, 4-0, 3-0, 2-0, 0, 2 and 5
PTFE Firm Pledget Shape & Size (for pledgeted codes):
Oval: 6mm x 3mm x 1.5mm and 3mm x 3mm x 1.5mm

MERISTEEL™

Steel

Optimum metal strength and flexibility

- Exceptional tensile strength
- Excellent tissue compatibility



Suture Sizes: USP 0 to 7
Needle Profiles: Blunt Point and Cutting

Also Available

MERIT - BONEWAX™



MERIT - UMBILICAL COTTON TAPE™



FILAPACE™

Temporary Pacing Wire

Merit Plastic & Ophthalmic Suture Ranges



Merit Plastic & Microsurgery Sutures

Reconstructing Lives with **Elegance**



Merit
Ophthalmic
Sutures

Where **Vision** Drives Excellence

Here are some of the features that distinguish Meril's Plastic and Ophthalmic Suture Ranges



Sharp and superior quality needles for effortless passage through tough tissues



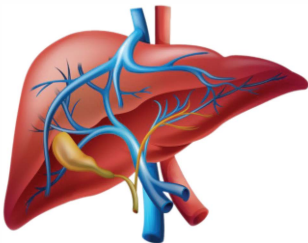
Smoother needle surfaces for less tissue trauma



High tensile strength sutures offering optimal knot security

*Please ask for the separate range literatures for the code details

Merit Suture Range For Liver & Kidney Transplant



FILAXYN™

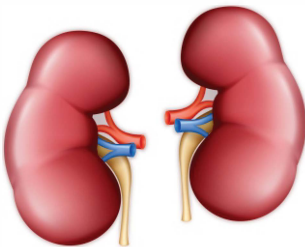
Polydioxanone

- Absorbable suture with extended support for immunosuppressant patients
- Available in finer sizes: 6-0, 5-0 and 4-0

FILAPROP™

Polypropylene

- Non-absorbable suture with high tensile strength
- High quality and high performance needles
- Available in finer sizes: 6-0, 5-0 and 4-0

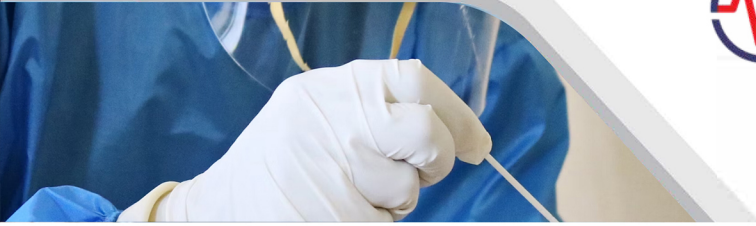


MITSU™

Polyglactin 910

- Absorbable sutures and ligatures
- High tensile and knotting strength
- Available as non needed ligatures in sizes: 4-0, 3-0 and 2-0

**A Wide Range of Donor Site Sutures,
Recipient Sutures and Benching Sutures Available**



Brand	Material	Merit Brand
Vicryl	Polyglactin 910	MITSU™
Vicryl Rapide	Polyglactin 910	MITSU FST™
Monocryl	Polyglecaprone 25	FILAPRON™
PDS II	Polydioxanone	FILAXYN™
Mersilk	Silk	FILASILK™
Ethilon	Nylon	FILAMIDE™
Prolene	Polypropelene	FILAPROP™
Ethibond XL	Polyester	MERICRON XL™
Ethisteel	Steel wire	MERISTEEL™

For clinical questions during validation, please call

Specialized Needles



For Episiotomy repair (MITSU FST)
PGF202777DN | PGF202762 | PGF202761



For Gynecological Procedure (MITSU)
PGN012519 | PGN012319 | PGP102517



For Orthopaedic Procedure (MITSU)
PGN012421 | PGN102534 | PDX019221



For General Surgery (MITSU)
PGN012360 | PGN102358



For Abdominal Wall Closure (FILAXYN)
PDX019352 | PDX019262 | PDX109261



For Port Closure (MITSU)
PGN012826 | PGN102825



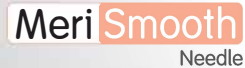
Round body needle, recommended
for blood vessels



Round body/tapercut needle with
black finish for enhanced visibility
under glaring OT lights



Round body/Spatulated needle
for finer surgeries



For easy penetrations
pass after pass



For Insertion via Trocar (MITSU)
PGN102901 | PGN202903



For Subcutaneous closure (FILAPRON) PCL301326U



Tapercut needle, for tough,
difficult-to-penetrate tissues