

A photograph of three surgeons in an operating room, wearing blue scrubs, masks, and caps, focused on a surgical procedure. The image is partially obscured by a dark blue geometric overlay on the right side.

WHERE
QUALITY MEETS
GLOBAL
STANDARDS

Sutures

Staplers

meritsurgicals.com

Merit Synthetic Absorbable Suture Range

MITSU™ Polyglactin 910



- Mid-term absorbable synthetic suture
- Ideal for soft tissue approximation

MITSU C+™ Polyglactin 910 with Chlorhexidine



- Mid-term absorbable synthetic suture with Chlorhexidine Gluconate
- Minimizes suture induced infections

MITSU FST™ Polyglactin 910 Fast



- Short-term absorbable synthetic suture in undyed form
- Preferred choice over conventional suture for Episiotomy Repair and Skin Closure

FILAXYN™

Polydioxanone Suture

Enduring Strength for long-term wound support

- Provides longer wound support and higher tensile strength retention compared to that offered by other synthetic absorbable sutures
- Pigmented with dark blue colour for enhanced visibility during procedure
- Recommended for fascia and tough tissue closure
- Preferred choice in immunosuppressant patients and in diabetic patients



FILAPRON™

Polyglycaprone 25

A Reliable choice for scarless Sub-cuticular suturing

- Short-term absorption profile
- Superior handling features
- High knot pull tensile strength
- Recommended for subcuticular suturing



Merit Natural Absorbable Suture Range

Optimal, time-tested performance

MERISOFT CHROMIC™

Chromic Catgut

- Chromicized to prolong the absorption period
- Accurate polishing ensures smooth passage through tissue
- Packed in Isopropyl Alcohol to reduce memory



MERISOFT PLAIN™

Plain Catgut

- Highest level of collagen guarantees predictable absorption
- Less memory and increased pliability



FILATWINE™

Pre-Knotted Loop Ligature

Ideal choice of ligature for Laparoscopic Appendectomy Surgery

- Composed of Chromic Catgut Suture
- Offers speedy ligation procedure
- Specially designed for ease of handling



Merit Non-Absorbable Suture Range

FILAPROP™

Polypropylene

Distinguished strength for life long support

- Allows smooth passage through tissue
- Optimal elasticity and elongation properties
- Excellent knot run down and knot security
- Available in Less Memory Tray



FILAMIDE™

Polyamide

Versatility in applications along with exceptional knot security

- Easy to handle
- Smooth passage through tissue
- Excellent histocompatibility



FILASILK™

Silk

Excellent handling characteristics with secured wound closure

- Excellent handling properties
- Good knot security
- Minimal inflammatory reaction in tissues



Merit Cardiovascular Suture Range



Merit Cardiovascular Sutures

BUILDING **TRUST** WITH CONSISTENCY

FILAPROP™

Polypropylene

FILAPROP™ P

Polypropylene with Pledgets

- Unsurpassed strength
- Optimal elasticity and elongation properties
- Excellent knot run down and knot security



Suture Sizes: USP 8-0, 7-0, 6-0, 5-0, 4-0, 3-0 and 2-0
PTFE Firm Pledget Shape & Size (for pledgeted codes):
Oval: 3mm x 3mm x 1.5mm and 2.3mm x 1.5mm x 0.5mm

MERICRON XL™

Polyester

MERICRON XL™ P

Polyester with Pledgets

- Greater strength and pliable structure
- Smoother suture surface
- Less resistance to knot sliding



Suture Sizes: USP 6-0, 5-0, 4-0, 3-0, 2-0, 0, 2 and 5
PTFE Firm Pledget Shape & Size (for pledgeted codes):
Oval: 6mm x 3mm x 1.5mm and 3mm x 3mm x 1.5mm

MERISTEEL™

Steel

**Optimum metal
strength and flexibility**



- Exceptional tensile strength
- Excellent tissue compatibility

Suture Sizes: USP 0 to 7
Needle Profiles: Blunt Point and Cutting

Also Available

MERIT - BONEWAX™



MERIT - UMBILICAL COTTON TAPE™



FILAPACE™

Temporary Pacing Wire

Merit Plastic & Ophthalmic Suture Ranges



Merit Plastic & Microsurgery Sutures

Reconstructing Lives with **Elegance**



Merit
Ophthalmic
Sutures

Where **Vision** Drives Excellence

**Here are some of the features that distinguish
Meril's Plastic and Ophthalmic Suture Ranges**



Sharp and superior
quality needles for
effortless passage
through tough tissues



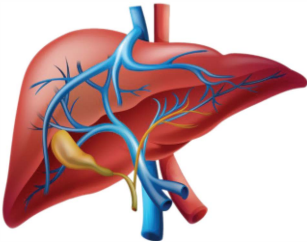
Smoother needle
surfaces for less
tissue trauma



High tensile strength
sutures offering
optimal knot security

*Please ask for the separate range literatures for the code details

Merit Suture Range For Liver & Kidney Transplant



FILAXYN™

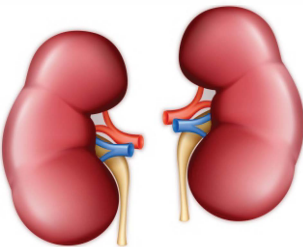
Polydioxanone

- Absorbable suture with extended support for immunosuppressant patients
- Available in finer sizes: 6-0, 5-0 and 4-0

FILAPROP™

Polypropylene

- Non-absorbable suture with high tensile strength
- High quality and high performance needles
- Available in finer sizes: 6-0, 5-0 and 4-0



MITSU™

Polyglactin 910

- Absorbable sutures and ligatures
- High tensile and knotting strength
- Available as non needled ligatures in sizes: 4-0, 3-0 and 2-0

**A Wide Range of Donor Site Sutures,
Recipient Sutures and Benching Sutures Available**

Specialized Needles



For Episiotomy repair (MITSU FST)
PGF202777DN | PGF202762 | PGF202761



For Gynecological Procedure (MITSU)
PGN012519 | PGN012319 | PGP102517



For Orthopaedic Procedure (MITSU)
PGN012421 | PGN102534 | PDX019221



For General Surgery (MITSU)
PGN012360 | PGN102358



For Abdominal Wall Closure (FILAXYN)
PDX019352 | PDX019262 | PDX109261



For Port Closure (MITSU)
PGN012826 | PGN102825



Round body needle, recommended
for blood vessels



Round body/tapercut needle with
black finish for enhanced visibility
under glaring OT lights



Round body/Spatulated needle
for finer surgeries



For easy penetrations
pass after pass



For Insertion via Trocar (MITSU)
PGN102901 | PGN202903



For Subcutaneous closure (FILAPRON) **PCL301326U**



Tapercut needle, for tough,
difficult-to-penetrate tissues